

AI Planning—Week 6

Tom Wambold
taw38@drexel.edu

Drexel University

July 29, 2009

WSDL Service - Movie Showtimes

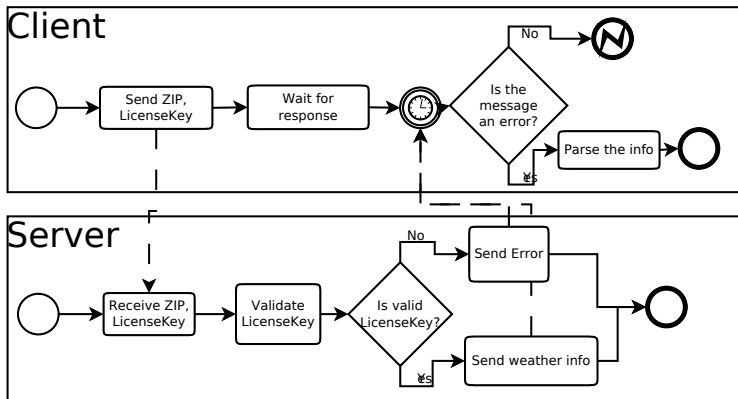
- Tried to find a real working web service
- Unsuccessful at finding one with OWL-S process model
- Found one with WSDL description
 - Find movie showtimes by ZIP code
- <http://www.ignyte.com/webservices/ignyte.whatsshowing.webservice/moviefunctions.asmx?wsdl>

- `http://www.andreas-hess.info/projects/annotator/index.html`
- Machine learning to annotate WSDL web services in OWL-S
- Hasn't been updated since 2004, can't seem to get it to work
- Contains archive of a lot of annotated WSDL descriptions with their OWL-S process models
- Most of these don't seem to work...

- Private web service to get weather information by ZIP, City/State, or IP address
- Requires a license key as a parameter to functions

Mapping to BPMN

- **B**usiness **P**rocess **M**odeling **N**otation
- Graphical representation for workflow process specification



Mapping to BPMN - Issues

- I don't think there are many ambiguities with such a simple process
- BPMN not as rigorously defined
- Ambiguities in actions, data types

- Find more complex services to do mapping for
- Specifically, compose services together
- Explore other languages (BPEL, PSL, IDEF3, UMLBPEL, PSL, IDEF3, UML)